



# PARAMOUNT PLAZA



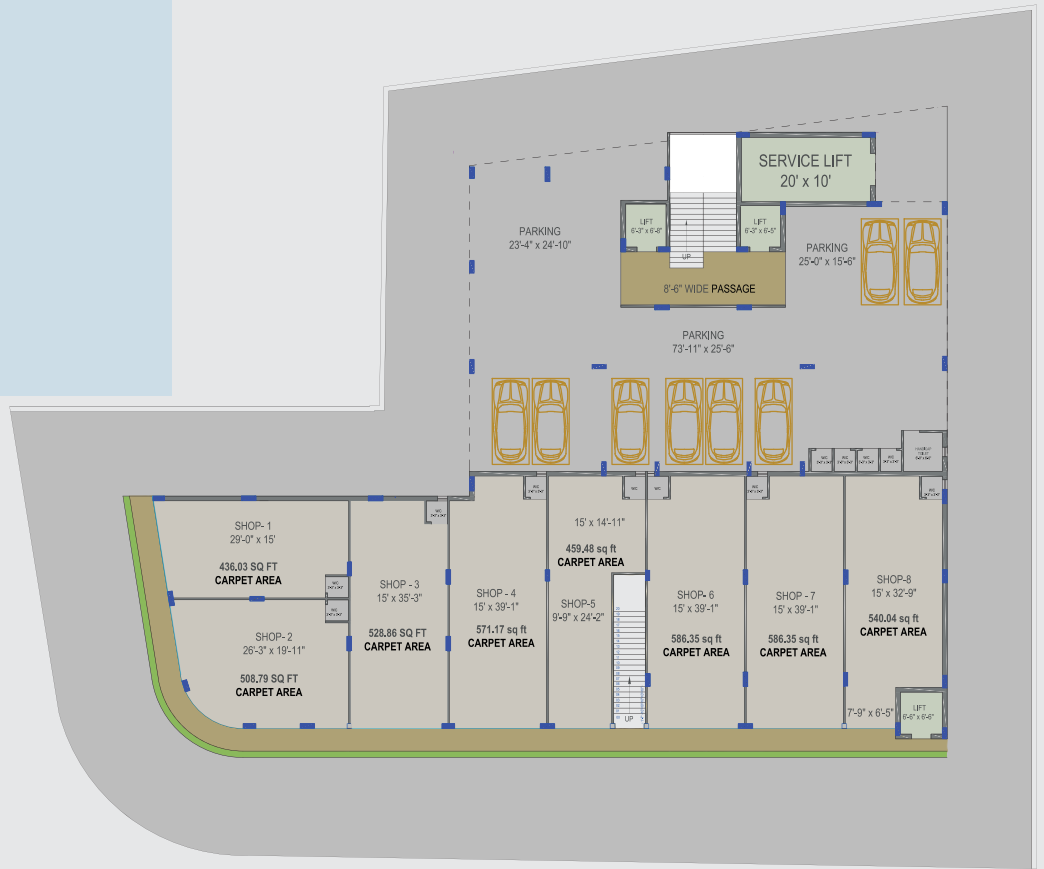
# PARAMOUNT PLAZA





# GROUND FLOOR

Shop No.	Sq. Ft.
1	436.03
2	508.79
3	528.86
4	571.17
5	459.48
6	586.35
7	586.35
8	540.04



# FIRST FLOOR

Shop No.	Sq. Ft.
101	876.09
102	300.39
103	337.62
104	173.34
105	174.70
106	173.34
107	173.34
108	173.34
109	296.42

Office No.	Sq. Ft.
101	237.40
102	230.99
103	240.23
104	278.21
105	329.27
106	324.84
107	196.18
108	213.68
109	227.43
110	211.36
111	230.58



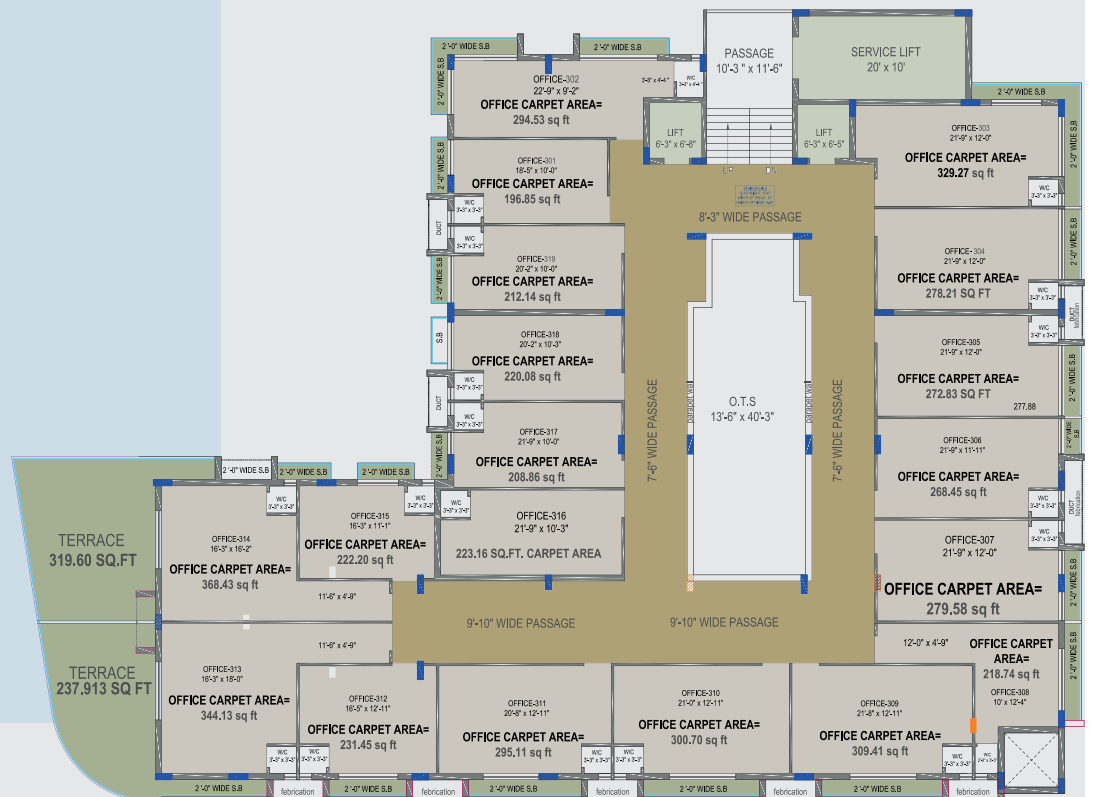
# SECOND FLOOR

Shop No.	Sq. Ft.	Office No.	Sq. Ft.
201	485.33	201	227.44
202	300.39	202	231.34
203	300.39	203	231.25
204	337.63	204	278.21
205	173.34	205	329.27
206	174.70	206	294.53
207	173.34	207	196.85
208	173.34	208	212.12
209	173.33	209	218.32
210	296.42	210	211.64
		211	222.13



# THIRD FLOOR

Office No.	Sq. Ft.
301	196.85
302	294.53
303	329.27
304	278.21
305	272.83
306	268.45
307	279.58
308	218.74
309	309.41
310	300.70
311	295.11
312	231.45
313	344.13
314	368.43
315	222.20
316	223.16
317	208.86
318	220.08
319	212.14

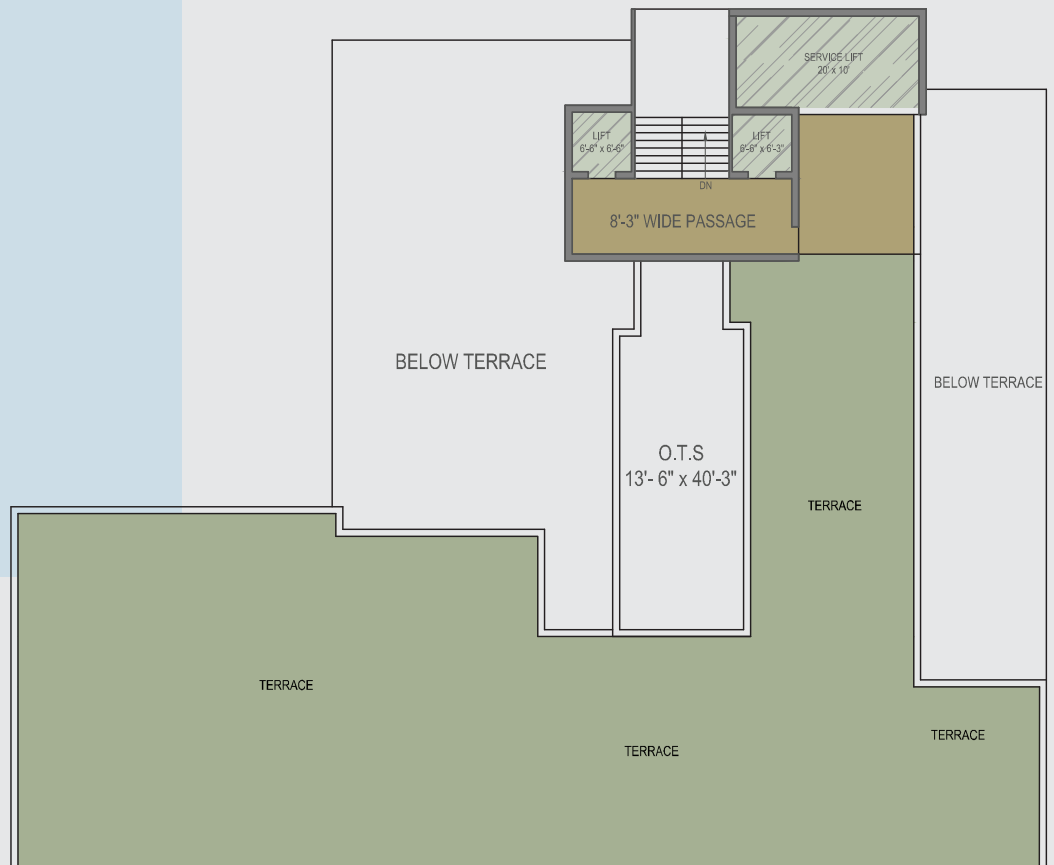


# FOURTH FLOOR

Office No.	Sq. Ft.
401	202.59
402	202.27
403	293.11
404	309.41
405	300.7
406	295.11
407	231.45
408	414.35
409	368.42
410	221.49
411	223.68



# TERRACE



## AMENITIES

- LOCATED IN MOST PREMIUM PART OF CITY.
- DOUBLE HEIGHT (16FT) SHOWROOMS.
- GRAND RECEPTION FOYER AND WAITING LOUNGE.
- 4 HI - SPEED AUTO DOOR ELEVATORS INCLUDING GOODS LIFT.
- CCTV SURVEILLANCE.
- CORPORATE CAFÉ.
- CONVENIENT PROVISION FOR AC OUTDOOR UNITS.
- FABULOUS BUILDING ELEVATION FOR A PERFECT CORPORATE LOOK.
- WELL EQUIPPED FIRE HYDRANT SYSTEM.
- ONE SPECIAL LIFT FOR SHOWROOMS ON 1ST & 2ND FLOOR.
- 24 X 7 SECURITY
- DG POWER BACKUP FOR COMMON AREAS.
- ATTRACTIVE SIGNAGE SPACE FOR SHOWROOMS.
- SOLAR ROOFTOP SYSTEM FOR COMMON AREAS.
- OFFICE'S WITH PRIVATE TERRACE.



## SPECIFICATION



### FLOORING

- » Premium vitrified tiles flooring in offices and showrooms.
- » Designer tiles in entrance foyer and common passages.



### ELECTRIFICATION

- » Concealed ISI copper wiring with modular switches.
- » Appropriate earthing in electric supply.
- » Distribution board with "MCB" or "ELCB" for maximum safety.



### DOORS

- » Elegant main door with premium laminates on both sides with high quality hardware fitting.
- » Internal doors of standard flush doors.



### WINDOWS

- » Standard sliding aluminium windows with anodized or powder coating finish.
- » Marble or granite equivalent window sills.



### PAINT

- » Internal office walls finished with wall putty.
- » Acrylic emulsion paint / texture for exteriors.
- » Royal paints finish in common areas.



### TOILETS

- » Bathrooms finished with superior quality ceramic tiles.
- » Branded sanitary wares and CP fittings.



Contact :

**+91 97271 84451 | +91 98794 66645**

**80Ft Road, Bapunagar Corner, Rajkot 360002.**

**LEGAL DISCLAIMER** All the elements, objects, treatment, materials, equipment & color scheme are artisan's impression & purely for presentation purpose. By no means it will form a part of the amenities, features or specification of our final product.

**NOTE :** All rights for alteration, modification & development in design or specification by architects & or developer shall be binding to all the members • Completion certificates as per RMC rules, clear title document will be provided by promoters for loan purpose. This brochure is for private circulation only. By no means it will form part of any legal contract.

• Stamp duty, Registration charges, Legal charges, PGVCL charges, Society maintenance deposit etc. shall be borne by the purchaser. • VAT, Service Tax, TDS, TCS, GST & or any other taxes levied in future will be borne by the purchaser as applicable. • Any additional charges or duties levied by the Government / Local Authorities during or after completion of the scheme shall be borne by the purchaser. • In the interest of continual developments in design & quality of construction, the developer reserves all rights to make any changes in scheme including and not limited to technical specifications, design, planning, layout & all purchasers shall abide by such changes. • Changes/ alteration of any nature including elevation, exterior color scheme, balcony grill or any other changes affecting the overall design concept & outlook of the scheme are strictly NOT PERMITTED during or after the completion of the scheme. • Any RCC member (Beam, Column, Slab) must not be damaged during your interior work. • Low-voltage cables such as telephone, TV and internet cables shall be strictly laid as per consultant's service. No wire/cables/conduits units shall be laid or installed such that they form hanging formation on the building exterior faces. • Common passages / landscaped areas are not allowed to be used for personal purpose. • AC outdoor units space is already designated in consultation with HVAC Consultant. It is planned according to design specification/elevation, available spaces, etc. No changes in location can be made on personal basis.